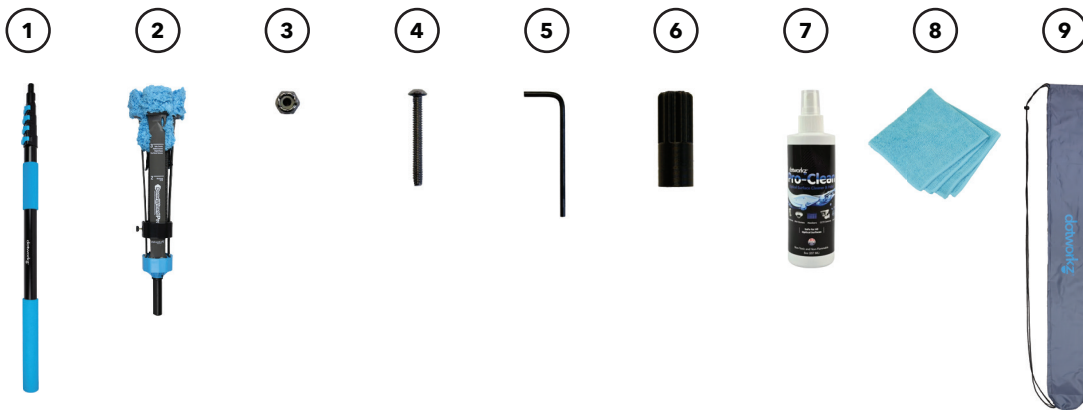


Included in Compact DomeWizard

- | | | |
|-----------------------------------|-------------------------------|-----------------------|
| 1. Extendable Pole 13ft / 4m | 4. 6-32 Stainless Steel Screw | 7. Pro-Clean Solution |
| 2. Cleaning Head w/ Washable Mitt | 5. 5/32 L-Key | 8. Washable Cloth |
| 3. 6-32 Stainless Steel Lock Nut | 6. Custom Socket Driver Tool | 9. Transportation Bag |



ASSEMBLY REQUIRED



PLEASE READ CAREFULLY BEFORE USING!



1. Always check for and avoid overhead hazards before use
2. Do not over tighten screws or bolts, as this may damage the pole and compromise the integrity
3. Apply Pro-Clean solution to mitt or towel before extending pole
4. Close blue pole latches completely to avoid pole collapse when in use
5. Retract and extend pole only when pole is vertical for best result
6. Always cover your DomeWizard with the included bag when not in use

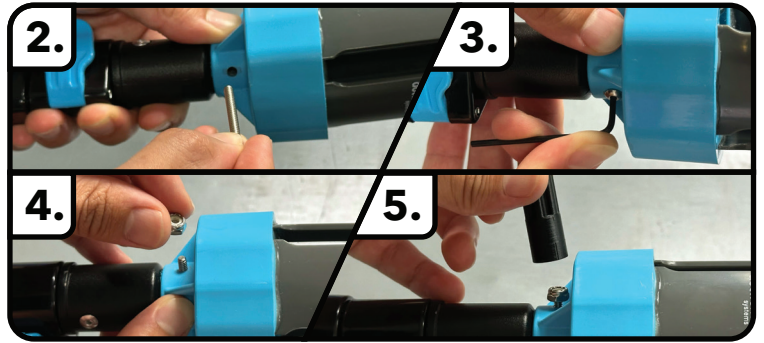
4-In-1 Cleaning - How to choose the right mode?

- **Mode 1:** Designed for large dome PTZ cameras, sensor covers, and other rounded surfaces. This mode ensures thorough and efficient cleaning of these components without the need for ladders or lifts.
- **Mode 2:** Shortens and collapses the cleaning mitt to form tightly around smaller mini domes, smoke sensors, LED lights, and beam detectors. This mode ensures precise and effective cleaning of these smaller, more delicate surfaces.
- **Mode 3:** Extends the cleaning mitt past the top of the internal head. This transforms the mitt into a versatile tool for cleaning flat surfaces such as flat lenses, monitors, multi-sensor cameras, signal lights, lasers, signs, medical devices, and more.
- **Mode 4:** Add a heavy-duty cleaning cloth to tackle tough cleaning tasks. This mode is ideal for removing heavy dirt, debris, and buildup from camera surfaces before using the primary cleaning mitt.

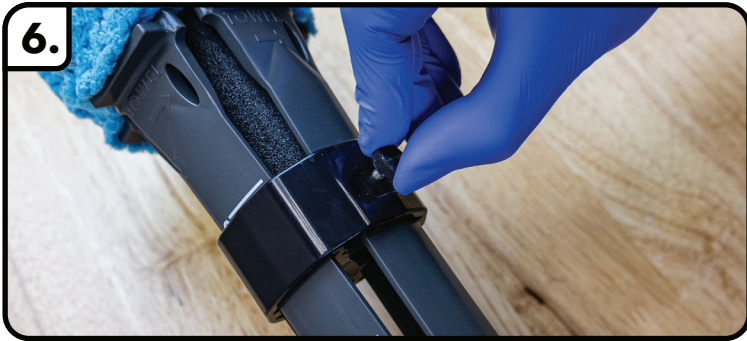
INSTRUCTIONS



1. Fasten cleaning head to pole tightly.



2. Place supplied screw through small hole on DomeWizard Head's base and fasten into place using provided lock nut and tools.



6. Loosen set screw, select desired cleaning mode, tighten set screw.



7. Apply Pro-Clean solution to mitt.



8. Open blue pole latches.



9. Extend (or retract) pole to desired height (only when pole is vertical).



10. Close blue pole latches completely (to avoid pole collapse when in use).



11. Clean desired surface quickly and safely. Retract and cover with transport bag when finished.

*Make sure to store your DomeWizard in bag when not in use.