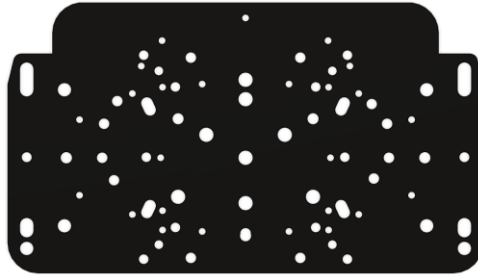


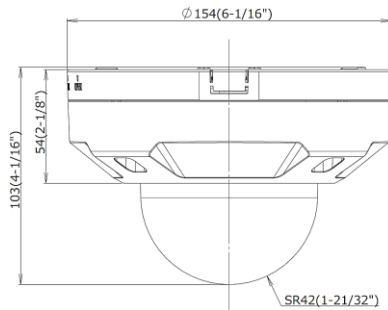


Outdoor Housing Compatibility

- **D2 & D3:** Internal Lens + Bottom Mounting + No Standoffs
 - Camera Plate



Camera Specifications (mm, (in.))



Power Input	PoE
Maximum Power Consumption	9.6 W
Operating Temperatures	-30°C to +50°C
Weight	1.0 kg
Dimensions (L x W x H)	154 x 154 x 105 (mm)

Housings Drawings (in.)

