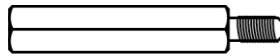


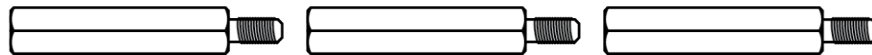


Outdoor Housing Compatibility

- **D2:** External Lens + Top Mounting + 1.5 in. Standoffs
 - Standoff Combination: **1 ½"**

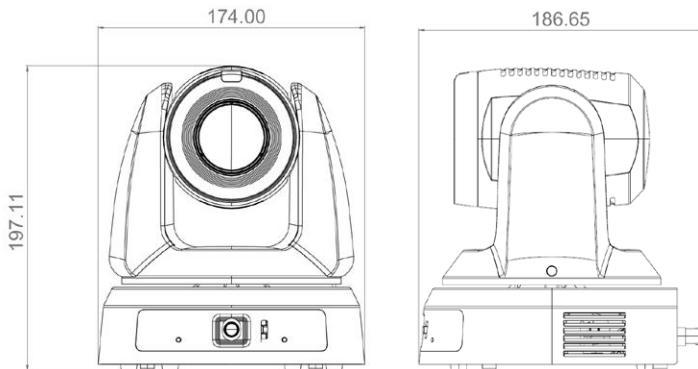


- **D3:** External Lens + Bottom Mounting + 4.5 in. Standoffs
 - Standoff Combination: **1 ½" + 1 ½" + 1 ½"**



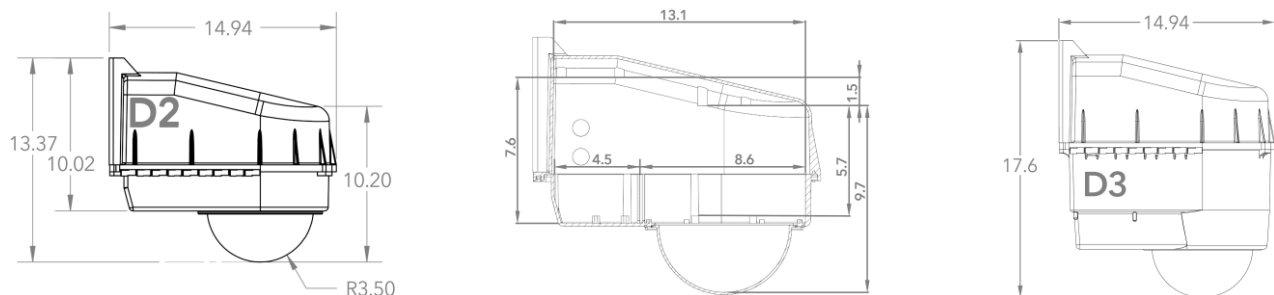
NOTE: Access to the panoramic camera at the base is restricted, and leveling can cause misalignment unless addressed with a spacer or similar.

Camera Specifications (mm)



Power Input	PoE+, 12VDC
Maximum Power Consumption	26 W
Operating Temperatures	*U/A
Weight	2.0 kg
Dimensions (L x W x H)	187 x 174 x 197 (mm)

Housings Drawings (in.)



* Values indicated as U/A were not released by the manufacturer at the time of publication.