



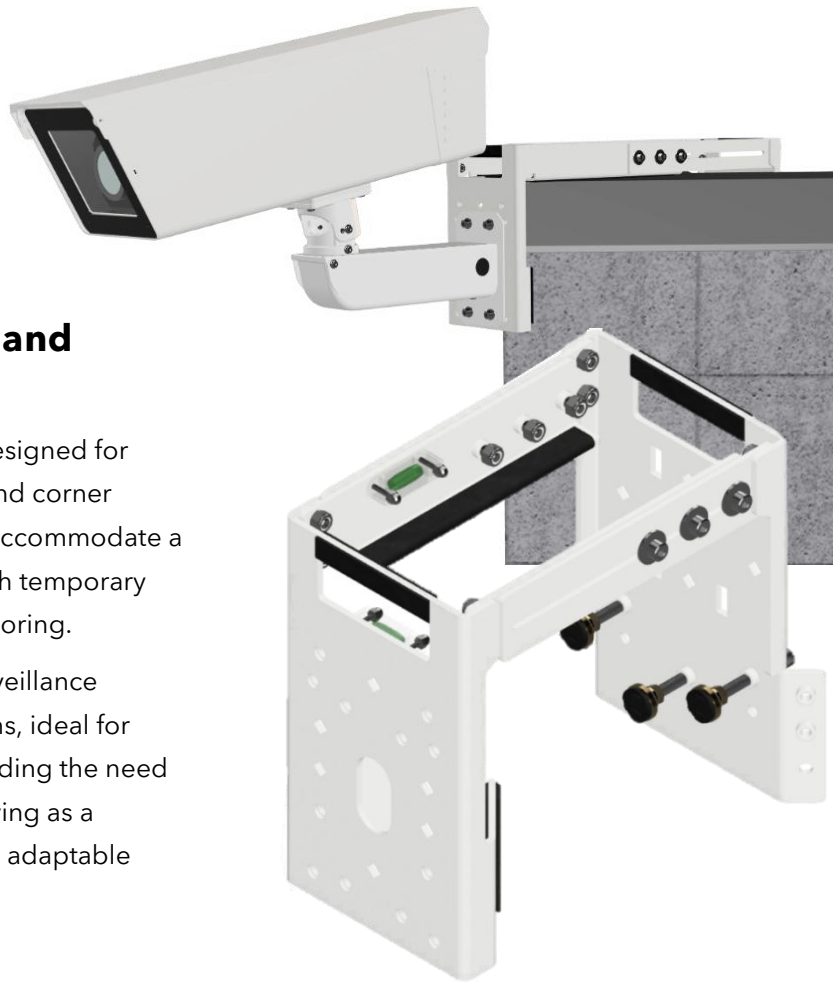
Z-BRACKET

Adjustable Roof Mount

Modular Non-Penetrating Wall and Corner Mount System

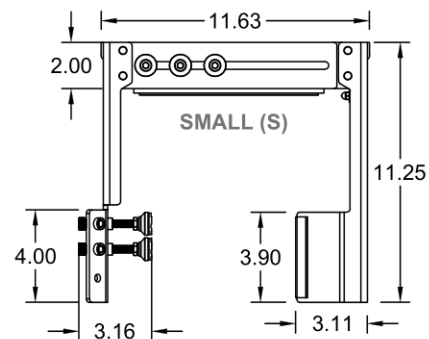
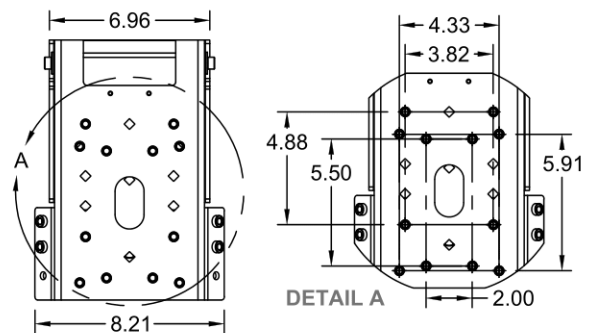
The Z-Bracket is a modular mounting solution designed for quick and secure installation on parapet walls, and corner intersections. It offers a fully adjustable span to accommodate a wide range of wall thicknesses and supports both temporary pressure-based installation and permanent anchoring.

The Z-Bracket is compatible with a variety of surveillance housings, camera arms, and equipment platforms, ideal for both retrofit and new-build applications. By avoiding the need for exterior wall access, ladders, or lifts, and arriving as a modular kit, the Z-Bracket ensures fast, safe, and adaptable deployment.

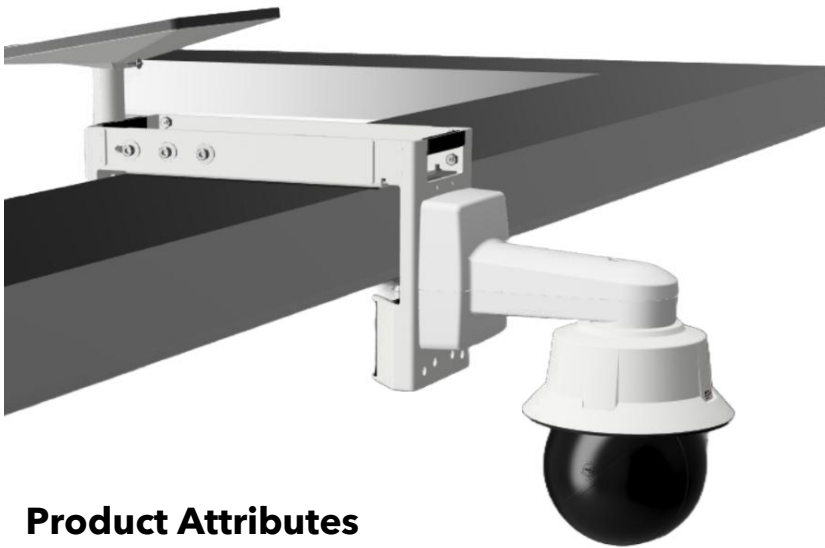


Key Features

- Non-penetrating mounting system using mechanical pressure.
- Dual configuration support: straight-wall and corner-wall installation.
- Supports small, large, and extra-large (combined) arm sets for variable span requirements.
- Three-axis leveling support with bubble levels.
- Compatible with multiple commercial mounting patterns for Dotworkz housings and many Axis products.
- Optional concrete screw anchoring with dedicated through-holes.
- Designed for rooftop-only installation with no external wall access required, no ladders or lifts needed.
- Low-profile design blends into architectural spaces.
- Built for long-term outdoor exposure with powder-coated finish and corrosion resistant hardware.



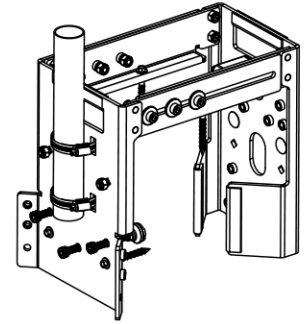
DIMENSIONS ARE IN INCHES



ADDITIONAL
HARDWARE

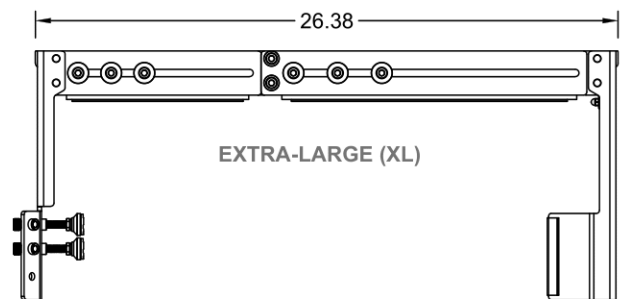
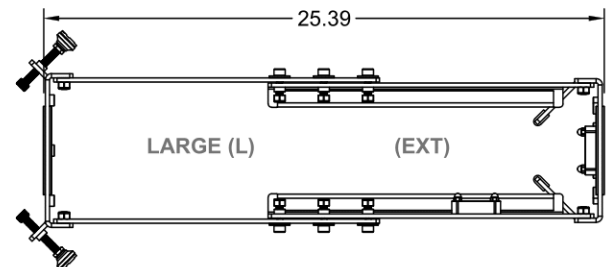
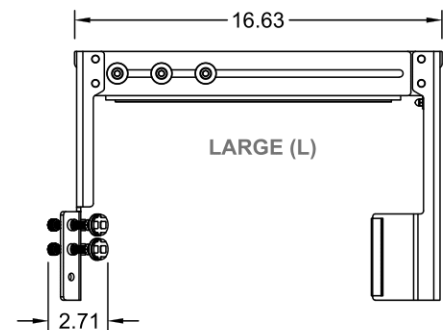
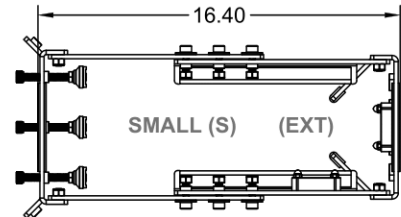
DIMENSIONS
ARE IN
INCHES

(EXT):
FULLY
EXTENDED



Product Attributes

- Adjustable Span Range: Supports wall thicknesses from 2" to 34" (varies by configuration).
- Material: Powder-coated aluminum (all structural components).
- Rubber Interface Material: EPDM U-channel.
- Mounting Patterns Supported: Dotworkz S-Type, D-Series, STXL, HD12, and Axis TQ5001-E, T91D61, T98A Series.
- Hardware Included: M8 socket head screws, washers, nylon locknuts, carriage bolts, concrete screws, and tools.
- Tools Included: 13mm wrench, and 6mm hex screwdriver.
- Finish: Outdoor-rated, white powder coating.
- Shipping Format: Flat-packed, modular kit with hardware bags.
- Estimated Assembly Time: 20 minutes.
- Estimated Installation Time: 10 minutes.
- Load Compatibility: Optimized for light to medium camera housings and support arms under 35 lbs.
- Weight: 11.0 lbs.
- Shipping Dimensions (L x W x H): 16.1" x 8.5" x 6.7"



Part Number: Z-BRACKET

SCAN

For more
Z-Bracket
Information



Or visit www.dotworkz.com/z-bracket

© **Dotworkz**
9340 Stevens Rd
Santee, CA 92071

Sales Inquiries
sales@dotworkz.com
www.dotworkz.com

2025 Dotworkz. Reproduction in whole or in part without written permission is prohibited. Features and specifications are subject to change without notice. Weights and measurements are approximate.