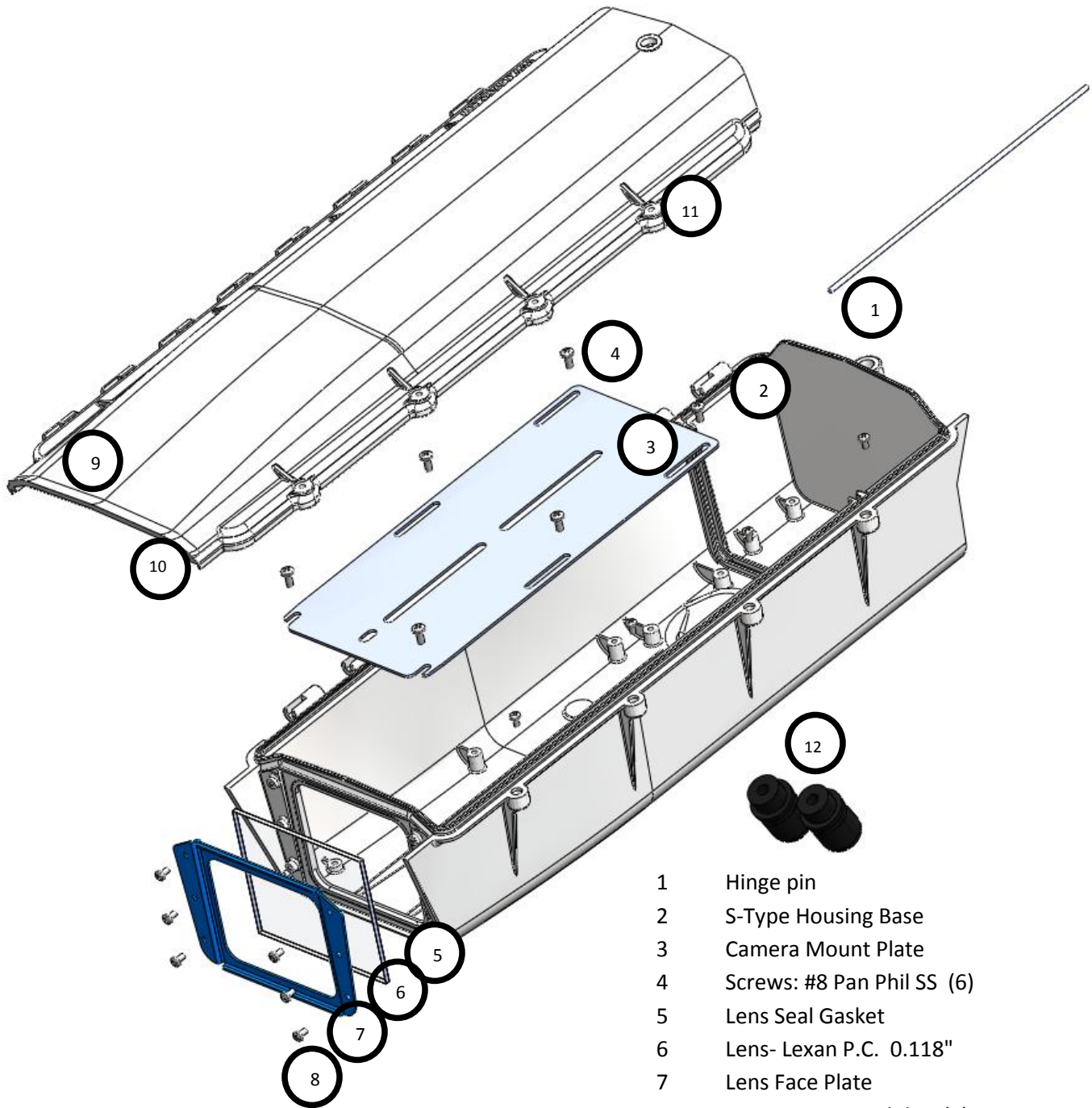


## S-Type Exploded Detail



- 1 Hinge pin
- 2 S-Type Housing Base
- 3 Camera Mount Plate
- 4 Screws: #8 Pan Phil SS (6)
- 5 Lens Seal Gasket
- 6 Lens- Lexan P.C. 0.118"
- 7 Lens Face Plate
- 8 Screws: #6 Pan Phil SS (6)
- 9 S-Type Housing Cover
- 10 Main Seal
- 11 Mach. Screws: #10 Pan Phil SS (4)
- 12 Cable Gland Seals (2)