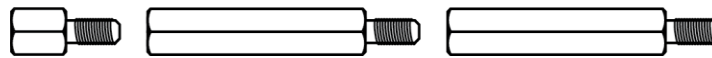




Outdoor Housing Compatibility

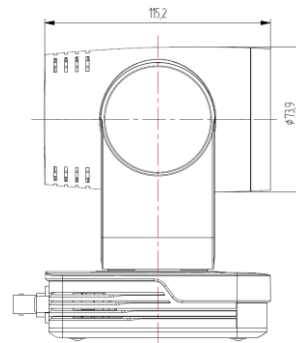
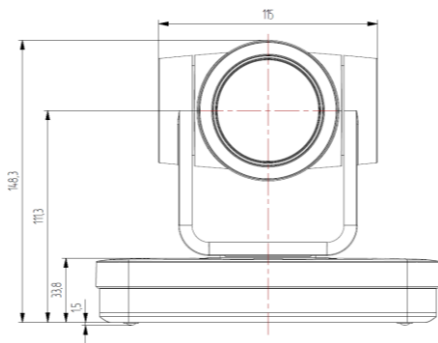
- **D2:** External Lens + Top Mounting + 3.375 in. Standoffs
 - Standoff Combination: $\frac{3}{8}$ " + $1\frac{1}{2}$ " + $1\frac{1}{2}$ "



- **D3:** External Lens + Bottom Mounting + 2.5 in. Standoffs
 - Standoff Combination: $1\frac{1}{2}$ " + 1 "



Camera Specifications (mm)



Power Input	12VDC
Maximum Power Consumption	30 W
Operating Temperatures	-00°C to +40°C
Weight	1.38 kg
Dimensions (L x W x H)	178 x 115.5 x 150.9 (mm)

Housings Drawings (in.)

